

SEPTEMBER 2017

MON

TUE

WED

THUR

FRI

Special Announcements

Breakfast Prices

Paid \$1.50

Reduced \$0.30

Adult \$2.00

1% lowfat unflavored and fat free chocolate milk are available at breakfast and lunch daily. A variety of fruit juice, fresh and canned fruit choices are also available daily. Substitutions may sometimes need to be made with a nutritionally comparable meal item.



TEXAS DEPARTMENT OF AGRICULTURE
COMMISSIONER SID MILLER



Good Eats at:
Paradise ISD

Schools

GET READY

FOR NATIONAL SCHOOL LUNCH WEEK!

OCTOBER 9-13

squaremeals.org/nslw

Glazed Whole Grain Donut or Assorted Cereal and Mozzarella String Cheese 1

9.4

Labor Day

+200



+100

+50



Holiday 4

Sausage Patty in a Split Southern Biscuit or Assorted Cereal and String Cheese 5

Whole Grain Frosted Strawberry Pop Tart with Assorted Cereal 6

Scrambled Egg, Bacon and Toast or Assorted Cereal and Whole Grain Toast 7

Dutch Waffle Dusted with Powdered Sugar or Assorted Cereal and Whole Grain Toast 8

Pancake Wrapped Sausage on a Stick or Assorted Cereal and Whole Grain Toast 11

All White Meat Chicken Tender in a Southern Biscuit with Honey Butter or Assorted Cereal and String Cheese 12

French Toast Sticks with Syrup or Assorted Cereal and Whole Grain Toast 13

Homemade Sausage, Egg and Cheese Breakfast Taco or Assorted Cereal and String Cheese 14

Glazed Whole Grain Donut or Assorted Cereal and Mozzarella String Cheese 15

Warm Ham & Cheese Croissant Sandwich or Assorted Cereal and Whole Grain Toast 18

Bacon and Cheese in a Split Southern Biscuit or Assorted Cereal and String Cheese 19

Fruit and Yogurt Layered Parfait with Assorted Cereal 20

Frosted Whole Grain Cinnamon Roll or Assorted Cereal and String Cheese 21

Dutch Waffle Dusted with Powdered Sugar or Assorted Cereal and Whole Grain Toast 22

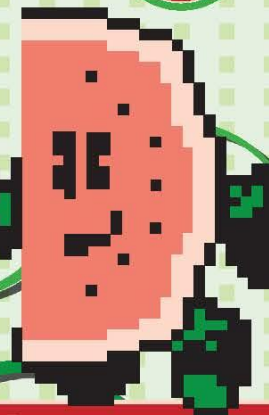
Sausage & Gravy Breakfast Pizza or Assorted Cereal and Whole Grain Toast 25

Sausage Patty in a Split Southern Biscuit or Assorted Cereal and String Cheese 26

Buttermilk Pancakes with Syrup or Assorted Cereal and Whole Grain Toast 27

Scrambled Egg, Bacon and Toast or Assorted Cereal and Whole Grain Toast 28

Glazed Whole Grain Donut or Assorted Cereal and Mozzarella String Cheese 29



Fun facts on back!